



# Beaufort County Public Works

## Stormwater Infrastructure

### Project Summary

**Project Summary:** Lady's Island Park

**Narrative Description of Project:**

Project improved 2,030 L.F. of drainage system. Grubbed, cleared and reconstructed 380 L.F. of workshelf. Reconstructed 1,175 L.F. of outfall ditch. Cleaned out 475 L.F. of roadside ditch. Reinstalled (1) access pipe. Jetted (2) crossline pipes. Installed rip rap and hydroseeded for erosion control.

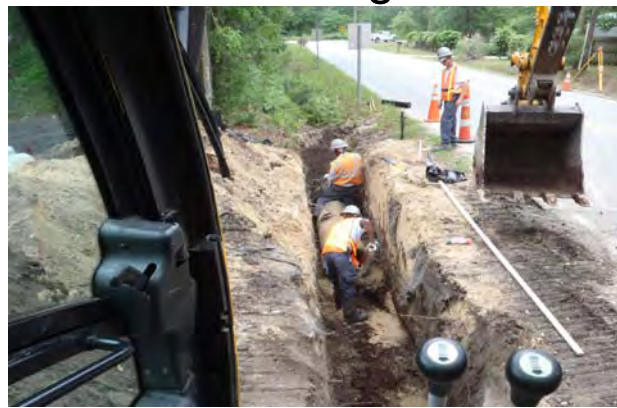
**Completion:** Jun-11

2011-569 / Lady's Island Park	Labor Hours	Labor Cost	Equipment Cost	Material Cost	Contractor Cost	Indirect Labor	Total Cost
APREIN / Access pipe - reinstalled	53.00	\$1,180.62	\$348.03	\$110.57	\$0.00	\$0.00	\$1,639.22
AUDIT / Audit Project	2.00	\$40.96	\$0.00	\$0.00	\$0.00	\$0.00	\$40.96
CLPJT / Crossline Pipe - Jetted	6.00	\$128.49	\$66.48	\$39.10	\$0.00	\$0.00	\$234.07
COMP / Compile Project	2.00	\$40.96	\$0.00	\$0.00	\$0.00	\$0.00	\$40.96
DLO / Ditch Layout	10.00	\$214.15	\$20.60	\$14.41	\$0.00	\$0.00	\$249.16
HAUL / Hauling	142.00	\$3,052.09	\$1,890.02	\$1,655.36	\$0.00	\$0.00	\$6,597.47
HYDR / Hydroseeding	12.00	\$246.90	\$86.92	\$200.94	\$0.00	\$0.00	\$534.76
LM / Loading Materials	28.50	\$584.15	\$424.24	\$150.04	\$0.00	\$0.00	\$1,158.43
ODREC / Outfall ditch - reconstructed	116.00	\$2,661.69	\$654.36	\$347.81	\$0.00	\$0.00	\$3,663.86
RDCO / Roadside ditch - cleaned out	106.00	\$2,356.42	\$441.12	\$178.11	\$0.00	\$0.00	\$2,975.65
UTLOC / Utility locates	4.50	\$92.16	\$14.42	\$6.46	\$0.00	\$0.00	\$113.04
WSDR / Workshelf - Dressed	23.00	\$471.04	\$543.66	\$145.95	\$0.00	\$0.00	\$1,160.65
WGRB / Workshelf - Grubbed	75.00	\$1,694.48	\$502.20	\$288.31	\$0.00	\$0.00	\$2,484.99
Indirect Labor, Services and Supplies	0.00	\$0.00	\$0.00	\$0.00	\$0.00	\$8,665.90	\$8,665.90
<b>2011-569 / Lady's Island Park Sub Total</b>	<b>580.00</b>	<b>\$12,764.11</b>	<b>\$4,992.05</b>	<b>\$3,137.06</b>	<b>\$0.00</b>	<b>\$8,665.90</b>	<b>\$29,559.11</b>
<b>Grand Total</b>	<b>580.00</b>	<b>\$12,764.11</b>	<b>\$4,992.05</b>	<b>\$3,137.06</b>	<b>\$0.00</b>	<b>\$8,665.90</b>	<b>\$29,559.11</b>

Before



During



After



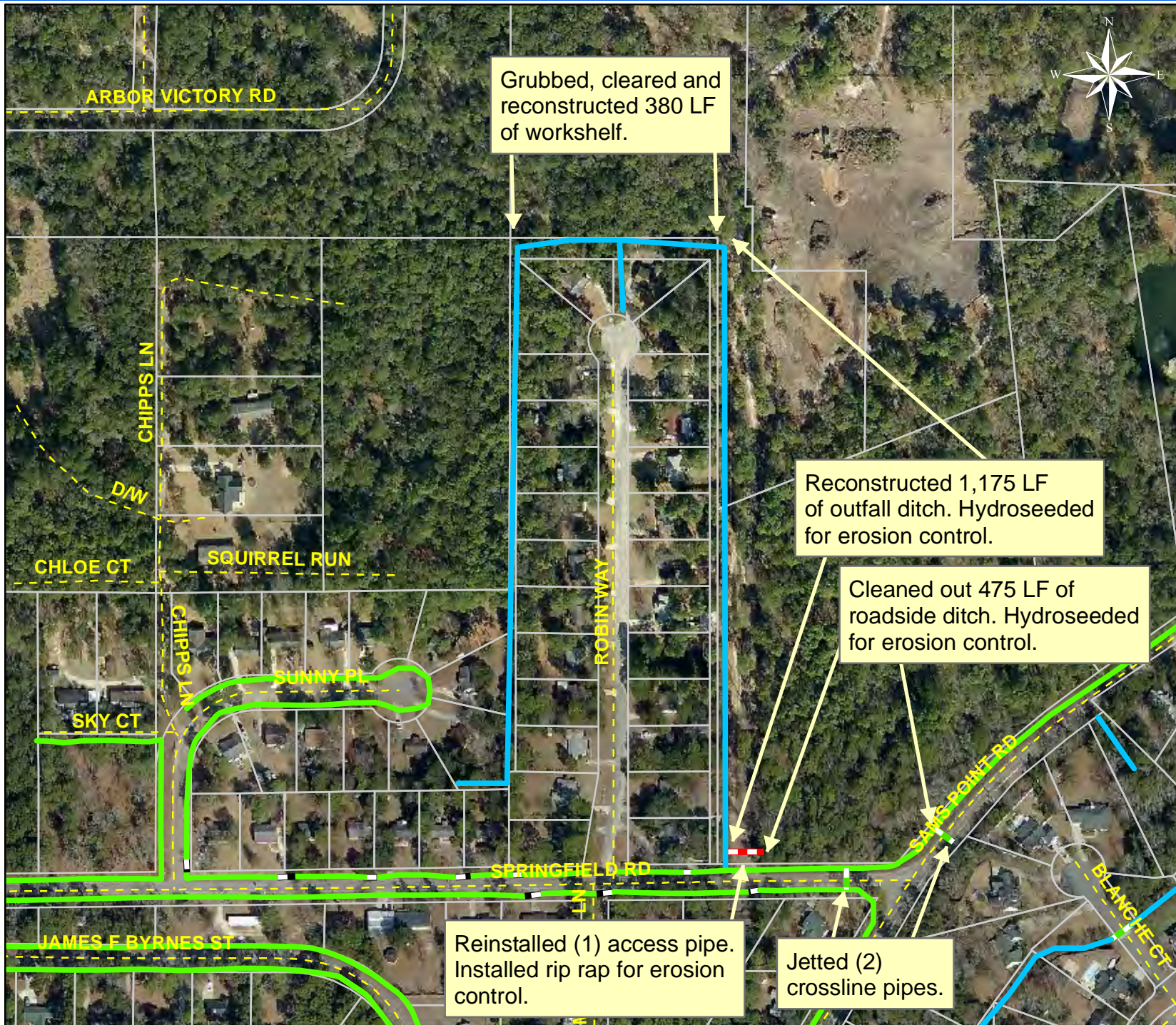
Project: Lady's Island Park

Activity: Drainage Maintenance

Project #: 2011-569







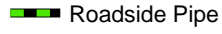







Township: Port Royal Island

Completed: June 2011



**Legend**

**Drainage Type**

-  River
-  Stream
-  Outfall
-  Lateral
-  Lateral Pipe
-  Roadside
-  Roadside Pipe
-  Road Pipe
-  Crossline
-  D/W
-  Access
-  Piped
-  Bleeder
-  Parcels



1 inch = 257 feet